



CHARLTON NURSERY



taking care - with education



some of the things that
really matter to us...

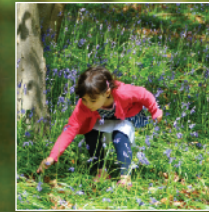
- quality, home-cooked food
- organic dairy produce from Yeo Valley
- home-baked bread, cakes & biscuits
- dedicated sleep rooms with wooden cots and blackout blinds for babies
- large gardens to facilitate learning through outdoor play
- committed, well-trained, professional staff



Charlton Nursery provides the very best childcare and early years education in two idyllic rural settings for babies and children aged six weeks to five years.



educational fun



At Charlton Nursery we believe in learning through play and everyday experiences, in addition to the more structured curriculum of the Early Years Foundation Stage.



Thank you for considering Charlton Nursery for your child.
We hope that this prospectus will encourage you to come
and visit us. We look forward to meeting you and your children.

Charlton Nursery Limited

49 Charlton Drive, Wraxall, Bristol BS48 1PF t 01275 810 304

Westbrook, Flax Bourton, Bristol BS48 3QX t 01275 464 815

|
www.charltonnursery.co.uk

What do I need to bring?

- 1 A Charlton Nursery smock - available to purchase at £17.50. We have a choice of delightful and practical smocks.
- 2 Welly boots, a coat, hat, gloves - or sun hat and cream.
- 3 A bag containing a spare change of clothes, and anything else your child may need.
- 4 Nappies if appropriate (we provide wipes).
- 5 Ready made-up bottles, or sterilised bottles and cartons of formula milk, clearly labelled with your child's name.



General Information

The nurseries are operated by an experienced, qualified Regional Nursery Manager and a day-to-day Manager, together with two Directors, Helen Nott and Emma Ryder, and supported by Deputy Managers. Each room is managed by an experienced senior nursery nurse and a team of qualified/trainee nursery nurses.

All of our meals are freshly prepared on the premises, using nutritious ingredients to provide a balanced diet. Our organic dairy produce is supplied by Yeo Valley. Breakfast can be provided upon request. We provide a mid-morning snack, a two course lunch and afternoon tea. Water is provided freely throughout the day. Fresh brown and white bread is made daily in our own kitchen.

We take your child's security and safety very seriously. Please watch your child carefully in the car park, especially when other parents may be reversing their cars. We cannot accept any responsibility for your child's safety once they have left the building. Security measures include secure fencing and gates around the property. Entrance and exit is via the main door, which is in full view of and operated by nursery staff.

Children with an infectious illness should not attend the nursery. Children with vomiting and diarrhoea must stay away from the nursery for 48 hours after the last episode.

We have a delightful staff/parents room for your comfort and convenience. You are welcome to stay and have a coffee and read a magazine whilst reassuring yourself that your child is settled and happy before you leave. Policy documents are available in this room for you to read.

Finalists in the NMT Awards 2006

- Nursery Manager of the Year
- Individual Nursery of the Year
- Nursery Business Newcomer



Fees/Hours

Our core hours are 8am until 1pm (morning session) and 1pm until 6pm (afternoon session). However, we are able to offer a babysitting service from 7.30am until 8am and from 6pm until 6.30pm for an extra £7.50 each session, subject to availability. We offer a reduction in fees if you take 8 sessions or more per week per child.

Under 2s

Morning rate	£29.25
Afternoon rate	£29.25
Daily rate	£58.50

8 sessions or more per week, daily rate £56.50

Over 2s

Morning rate	£27.00
Afternoon rate	£26.00
Daily rate	£53.00

8 sessions or more per week, daily rate £51.00

The nursery is open 51 weeks per year and fees are charged monthly. We are closed between Christmas and New Year for which you will not be charged. However, we are also closed on Bank Holidays, for which you will be charged. Sadly, we are unable to offer any discounts for absences due to sickness or holidays.

Payment is strictly by Direct Debit or Childcare Vouchers, you will be given a letter when your child starts with more details regarding this. We accept nursery grant funding for children over 3 years old.

We require at least one month's notice of any reduction in sessions, including notice of intention to leave the Nursery.

Fees are reviewed annually, usually on 1st September.

A £50 non-refundable registration fee should accompany your completed registration form.

At your first settling in session we will ask you to complete a Direct Debit mandate.

Extra sessions, if available, may be arranged if we have spaces. They will be charged to your next invoice.

Please be advised that if you offer employment to a member of our staff, we will charge a recruitment fee of 10% of the salary agreed. Payment of your child's nursery fees constitutes your acceptance of our Terms of Business.



Structure

The nursery provides daycare and education in a comfortable and homely environment. Rooms are split into four age groups and children can move up as soon as they are able to cope with the demands of the next room and we have space to accommodate them.

Snowdrop Room

6 weeks up to 18 months

A cosy room, predominately carpeted, with a no-shoe policy and a comfy sofa and cushions for lots of cuddles. We have a separate sleep room with wooden cots and grow-bags for each baby. Emma Ryder is a non-practising midwife and general nurse (and mother of 4) whose wealth of childcare experience is reassuring to new mothers. We take the babies for walks and also make the most of our garden, weather permitting.

Daffodil Room

14 months - 30 months (approx)

As soon as babies start to toddle, they are encouraged to join the Daffodil Room. With the assistance of our wonderfully caring nursery nurses, they are introduced to a wealth of new sensory experiences inside and outside the nursery. As with the baby room, we have a separate sleep room.

Bluebell Room

26 months - 3 1/2 years (approx)

Freedom of movement is encouraged as much as is practical in this room. We have access to the garden at all times to encourage all sorts of play outdoors. We also have a separate sleep room which can accommodate sleeping children if required.

Sunflower Room

From 3 years (approx)

This room is overseen by a qualified teacher. We benefit from regular extra-curricular activities.

We adhere closely to the EYFS, which is carefully structured to the needs of each individual child. The emphasis is very much on learning through play and experiences, and we benefit hugely from our rural environment.

